

harman / kardon[®]
Designed to Entertain.[™]

THE HARMAN KARDON[®] GLA-55. STUNNING CLARITY COMES TO DESKTOP AUDIO.

HARMAN KARDON® GLA-55

INTRODUCING THE FIRST AUDIOPHILE-QUALITY SOUND SYSTEM FOR MULTIMEDIA DEVICES.

After years of relentless advancement in the power and sophistication of computers, digital audio players, video consoles and other entertainment devices, multimedia audio has finally caught up. The Harman Kardon GLA-55 audio system brings impeccable sonic performance, stunning design and exquisite craftsmanship to the desktop for the first time, forever raising expectations of what multimedia sound can be.

With 112 watts of onboard power, muscular Atlas™ AL woofers in a Slipstream port design for high-output, low-distortion bass, and CMMD® Lite tweeters for high-frequency sound as transparent as the speakers themselves, the GLA-55 is one of the finest 2-channel speaker systems ever engineered, and surely among the most distinctive.





A HISTORY OF FIRSTS.

As the first audiophile-quality multimedia speaker system, the GLA-55 joins a long list of other Harman Kardon firsts. From the first high-fidelity receiver and the first high-current amplifier, to the first home audio computer link and the mobile electronics in many of the world's leading luxury cars, Harman Kardon products have changed the way people experience audio – whenever and however they listen.

TOTAL COMPATIBILITY.

The GLA-55 speaker system is compatible with virtually any audio device with an analog output. A stereo mini jack connection allows you to enjoy the ultimate audio performance from a variety of devices such as desktop and laptop computers (all platforms), MP3 players and CD players.





EASY-TO-USE TOUCH CONTROLS.

Just a touch increases or decreases the volume. Touch both volume controls simultaneously to mute; touch again to unmute. An LED on the front of each speaker lets you know when the system is on, in standby, or muted.

Digital Amplification and Sound Processing.

GLA-55 transducers ① are driven by 112 watts (56 per channel) of cool-running onboard digital amplification with DSP (digital sound processing) equalization. A chrome-plated, solid-copper bus delivers the signal from the amplifier to the speakers with minimal resistance and signal loss. An integrated heatsink and fully shielded amp enclosure eliminate the potential for electrical interference.

Atlas™ AL Woofers.

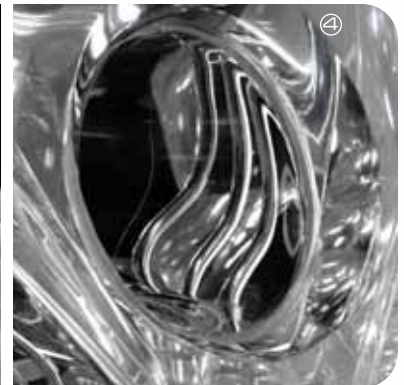
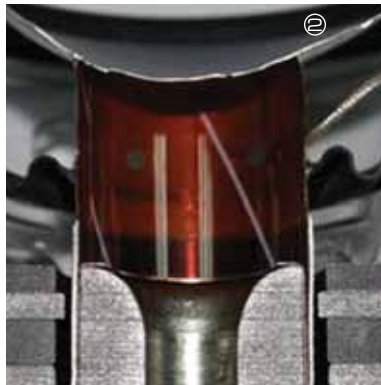
Engineered specifically for GLA-55, the 3" Atlas aluminum-cone woofer ② is capable of peak-to-peak excursions of nearly an inch. That's equivalent to woofers six times as large, delivering remarkably tight, accurate bass reproduction.

CMMD® Lite Tweeters.

Featuring the same edge-driven Ceramic Metal Matrix Diaphragm (CMMD) dome tweeter ③ found in high-end Harman Kardon loudspeakers and home theater systems, the GLA-55 takes multimedia audio to a new high, with linear response to 20kHz.

Slipstream Port Design.

All bass ports reduce distortion by venting the internal pressure created in the normal movement of woofer cones. But the revolutionary shape of the GLA-55's Slipstream port ④ provides more surface area outside the enclosure than conventional cylindrical ports, creating an "adverse pressure gradient." That increases bass output with greatly reduced port noise and distortion.



PMMA Enclosures.

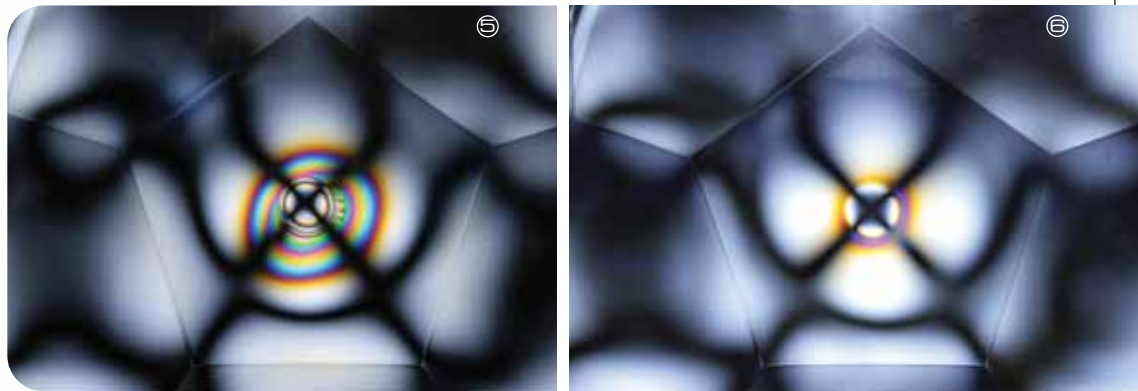
The striking GLA-55 enclosures are formed of molded polymethyl methacrylate, the material used in bulletproof glass, which is annealed (Ⓢ before, Ⓢ after) for even greater strength. This process includes baking each enclosure at 80 degrees Celsius for four hours, which provides increased dimensional stability by realigning the molecular structure of the enclosure material. The unique shape of the enclosures, with multiple facets of varying thickness, improves bass performance and reduces unwanted distortions and resonances.

Computer-Optimized Equalization (COE).

The GLA-55 system equalization has been computer-optimized to provide a rich soundstage over a wide range of listening positions.

Optimized Compression Technology (OCT).

The GLA-55 utilizes a proprietary compression technology, which ensures clean, accurate sound at high output levels.



SPECIFICATIONS.

Input Requirement:	Main connection – 1/8" (3.5mm) mini stereo jack
Drivers:	1 x CMMD® Lite, 1 x Atlas™ AL driver per satellite
Power:	56 Watts per satellite at 1% THD
Frequency Response:	35Hz – 20kHz (–10dB)
Dimensions (H x W x D):	12" x 5" x 12" (304mm x 125mm x 304mm)
Weight:	2.5 lb (1.2kg)
Input Impedance:	5k ohms
Voltage Input:	120V AC (U.S.)

harman / kardon®


250 Crossways Park Drive, Woodbury, NY 11797
www.harmankardon.com
Part No. GLA-55LIT11/02

♻️ Printed in USA on paper made with 100% post-consumer fiber.

Designed, edited and digitally produced by the
Harman Consumer Group Marketing & Design Center,
Woodbury, NY.

©2008 Harman International Industries, Incorporated. All rights reserved.

Harman Kardon and CMMD (patent nos. 6,327,372 and 6,404,897) are trademarks of
Harman International Industries, Incorporated, registered in the United States and/or other countries.
Designed to Entertain and Atlas are trademarks of Harman International Industries, Incorporated.

 Harman International